

YEAR 2012

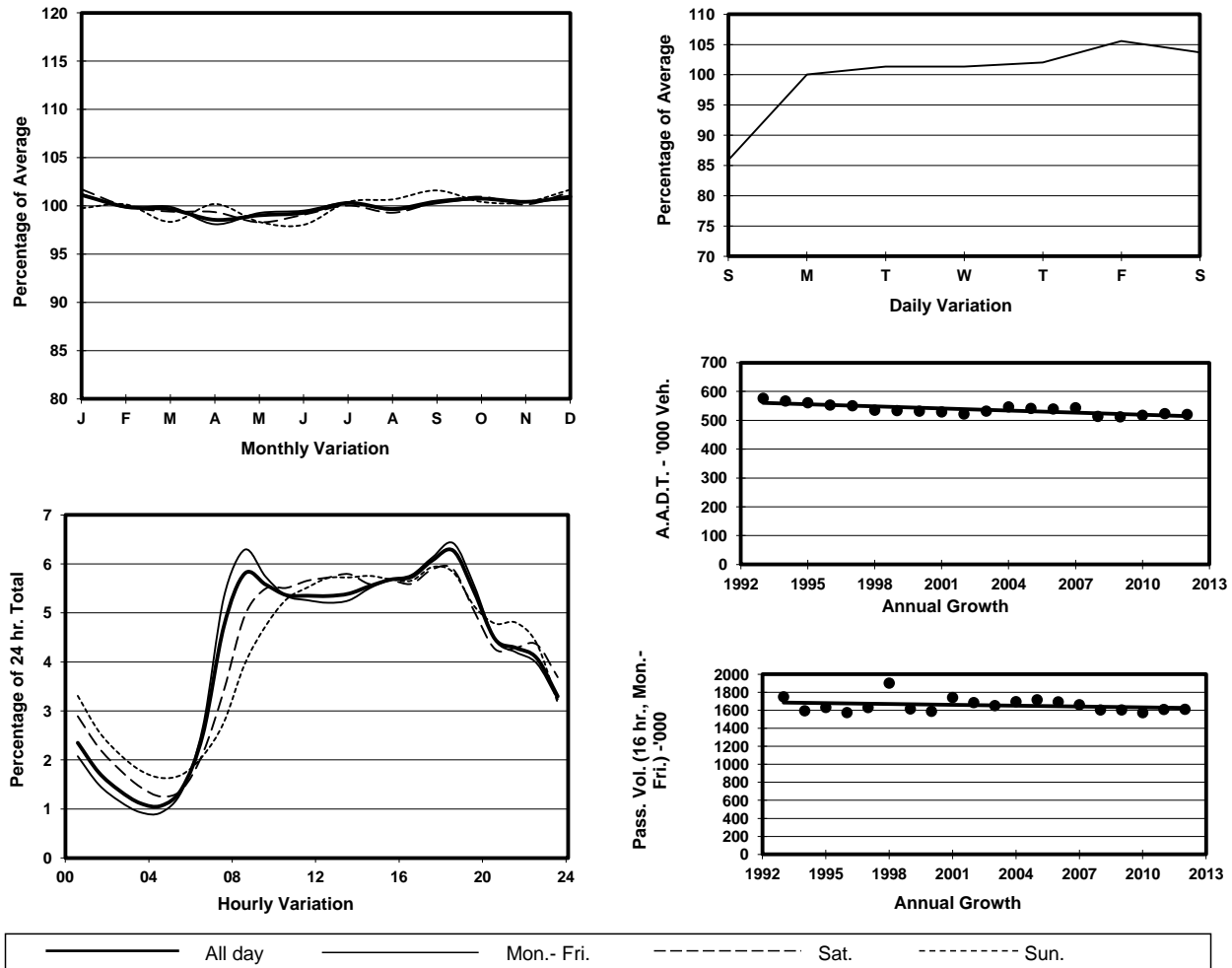
Location

Screenline A-A(Urban Railway Line)

Stations on Cordon/Screenline

3001, 3002, 4202, 4203, 4204, 4205, 4206, 4207, 4208, 4221 and 4401

## 1. TRAFFIC FLOW VARIATION AND GROWTH



## 2. TRAFFIC CHARACTERISTICS (BY DIRECTION)

| Parameter                            | All - Day | Mon. - Fri. | Sat.      | Sun.      |
|--------------------------------------|-----------|-------------|-----------|-----------|
| <b>EAST BOUND</b>                    |           |             |           |           |
| A.A.D.T.                             | 272050    | 279820      | 284640    | 234870    |
| R 12 / 24 - %                        | 66.4      | 67.5        | 64.8      | 61.8      |
| R 16 / 24 - %                        | 85.1      | 86.2        | 83.1      | 81.6      |
| AM Peak Hour                         | 0800-0900 | 0800-0900   | 0900-1000 | 0900-1000 |
| One-way flow at AM peak hour         | 15420     | 17220       | 15280     | 10790     |
| T - % (AM)                           | -         | 11.5        | -         | -         |
| PM Peak Hour                         | 1800-1900 | 1800-1900   | 1700-1800 | 1700-1800 |
| One-way flow at PM peak hour         | 17010     | 17950       | 16910     | 13980     |
| T - % (PM)                           | -         | 7.8         | -         | -         |
| Prop.of commercial vehicles - 16 hr. | -         | 10.1        | -         | -         |
| <b>WEST BOUND</b>                    |           |             |           |           |
| A.A.D.T.                             | 248340    | 255320      | 258850    | 215940    |
| R 12 / 24 - %                        | 67.4      | 68.4        | 65.6      | 63.4      |
| R 16 / 24 - %                        | 85.1      | 86          | 83.2      | 81.6      |
| AM Peak Hour                         | 0800-0900 | 0800-0900   | 0900-1000 | 0900-1000 |
| One-way flow at AM peak hour         | 14780     | 16430       | 14590     | 10530     |
| T - % (AM)                           | -         | 9.2         | -         | -         |
| PM Peak Hour                         | 1800-1900 | 1800-1900   | 1800-1900 | 1700-1800 |
| One-way flow at PM peak hour         | 15610     | 16400       | 15320     | 12770     |
| T - % (PM)                           | -         | 7.4         | -         | -         |
| Prop.of commercial vehicles - 16 hr. | -         | 9.2         | -         | -         |

## 3. OTHER INFORMATION AND COMMENT

**4. Vehicle classification and occupancy - Monday to Friday**

| Time                   |     | Class of vehicle |         |      |         |      |            |       |         |         |      |
|------------------------|-----|------------------|---------|------|---------|------|------------|-------|---------|---------|------|
|                        |     | Motor            | Private | Taxi | Private | PLB  | Goods veh. |       | Non     | Fr. Bus |      |
|                        |     | Cycle            | Car     |      | LB      |      | Light      | M & H | Fr. Bus | SD      | DD   |
| 0700-0800              | Pro | 4.4              | 25.0    | 31.0 | 2.4     | 6.0  | 15.8       | 3.9   | 6.3     | 0.2     | 4.9  |
|                        | Ocp | 1.1              | 1.4     | 2.0  | 6.3     | 11.1 | 1.4        | 1.2   | 12.5    | 10.9    | 39.0 |
| 0800-0900              | Pro | 3.5              | 42.8    | 24.2 | 1.1     | 4.8  | 13.3       | 3.1   | 3.8     | 0.1     | 3.3  |
|                        | Ocp | 1.1              | 1.4     | 2.0  | 5.7     | 13.7 | 1.6        | 1.4   | 17.5    | 17.7    | 49.3 |
| 0900-1000              | Pro | 2.4              | 35.3    | 25.1 | 0.9     | 4.2  | 21.6       | 4.4   | 2.5     | 0.1     | 3.6  |
|                        | Ocp | 1.1              | 1.4     | 2.0  | 2.4     | 11.7 | 1.6        | 1.4   | 7.5     | 10.4    | 27.9 |
| 1000-1100              | Pro | 2.5              | 31.9    | 26.1 | 1.1     | 3.7  | 25.1       | 4.7   | 1.5     | 0.1     | 3.3  |
|                        | Ocp | 1.1              | 1.4     | 1.8  | 2.3     | 9.7  | 1.5        | 1.4   | 8.7     | 10.0    | 23.6 |
| 1100-1200              | Pro | 2.5              | 31.7    | 26.6 | 1.2     | 3.6  | 24.7       | 4.7   | 2.0     | 0.1     | 3.0  |
|                        | Ocp | 1.1              | 1.5     | 2.0  | 1.8     | 9.7  | 1.5        | 1.4   | 9.6     | 10.0    | 26.7 |
| 1200-1300              | Pro | 2.4              | 35.1    | 25.5 | 1.4     | 3.6  | 21.7       | 4.1   | 2.9     | 0.1     | 3.0  |
|                        | Ocp | 1.1              | 1.5     | 2.0  | 4.2     | 9.9  | 1.6        | 1.4   | 11.8    | 11.3    | 26.1 |
| 1300-1400              | Pro | 2.3              | 32.9    | 26.1 | 1.8     | 3.3  | 23.4       | 4.1   | 2.5     | 0.1     | 3.4  |
|                        | Ocp | 1.1              | 1.5     | 2.0  | 3.9     | 12.0 | 1.5        | 1.4   | 11.6    | 12.2    | 26.6 |
| 1400-1500              | Pro | 3.0              | 33.9    | 24.5 | 1.2     | 3.1  | 24.4       | 4.5   | 2.3     | 0.1     | 3.1  |
|                        | Ocp | 1.0              | 1.5     | 2.0  | 2.3     | 10.7 | 1.6        | 1.4   | 7.4     | 10.5    | 28.1 |
| 1500-1600              | Pro | 2.5              | 35.4    | 24.1 | 2.0     | 3.2  | 22.3       | 4.4   | 3.2     | 0.1     | 2.9  |
|                        | Ocp | 1.1              | 1.5     | 2.1  | 4.6     | 11.1 | 1.6        | 1.5   | 13.5    | 12.2    | 28.0 |
| 1600-1700              | Pro | 2.9              | 37.2    | 24.5 | 1.5     | 3.3  | 20.6       | 3.7   | 3.1     | 0.1     | 3.0  |
|                        | Ocp | 1.1              | 1.5     | 2.0  | 3.5     | 12.1 | 1.5        | 1.4   | 6.3     | 16.4    | 32.2 |
| 1700-1800              | Pro | 3.9              | 39.7    | 22.9 | 1.3     | 4.0  | 18.9       | 2.6   | 2.8     | 0.1     | 3.7  |
|                        | Ocp | 1.1              | 1.5     | 2.0  | 3.1     | 13.3 | 1.6        | 1.4   | 8.6     | 15.4    | 37.9 |
| 1800-1900<br>Peak Hour | Pro | 5.1              | 45.2    | 24.4 | 0.5     | 4.7  | 12.6       | 2.1   | 2.5     | 0.1     | 2.9  |
|                        | Ocp | 1.1              | 1.5     | 2.2  | 2.6     | 15.5 | 1.6        | 1.4   | 15.6    | 16.5    | 55.9 |
| 1900-2000              | Pro | 3.4              | 49.5    | 26.3 | 0.3     | 5.1  | 8.8        | 1.5   | 2.2     | 0.1     | 2.9  |
|                        | Ocp | 1.1              | 1.5     | 2.2  | 2.2     | 14.3 | 1.6        | 1.4   | 13.7    | 13.8    | 48.4 |
| 2000-2100              | Pro | 2.6              | 44.3    | 33.8 | 0.2     | 5.0  | 7.2        | 1.3   | 2.1     | 0.1     | 3.3  |
|                        | Ocp | 1.2              | 1.5     | 2.1  | 2.1     | 12.3 | 1.6        | 1.3   | 13.3    | 6.7     | 32.3 |
| 2100-2200              | Pro | 2.9              | 39.5    | 37.9 | 0.2     | 5.1  | 7.0        | 1.3   | 2.0     | 0.1     | 3.9  |
|                        | Ocp | 1.1              | 1.7     | 2.1  | 2.5     | 12.3 | 1.7        | 1.4   | 5.9     | 7.6     | 30.5 |
| 2200-2300              | Pro | 3.3              | 41.1    | 38.5 | 0.3     | 5.6  | 4.4        | 1.1   | 1.3     | 0.2     | 4.2  |
|                        | Ocp | 1.2              | 1.6     | 2.0  | 2.1     | 11.0 | 1.5        | 1.3   | 5.6     | 6.0     | 28.2 |
| 16 hours               | Pro | 3.1              | 37.6    | 27.1 | 1.1     | 4.2  | 17.4       | 3.3   | 2.7     | 0.1     | 3.4  |
|                        | Ocp | 1.1              | 1.5     | 2.0  | 3.8     | 12.1 | 1.6        | 1.4   | 11.3    | 11.9    | 34.3 |

**Legend**

- Pro.** Proportion of vehicles in % (Sum may not add up to 100% due to figure rounding)
- Ocp.** Average occupancy of vehicles
- M & H** Medium and Heavy